

# \$491,800

House and Land Package – Lot 99 Mossvale Drive, Edenbrook



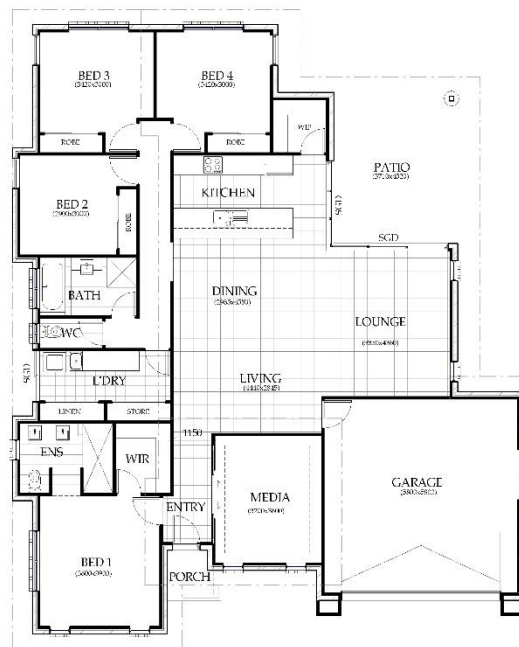
Artist impression for illustration purposes only

## Eros 225

4 | 2 | 2 |  
Land 1032m<sup>2</sup> | Width 15.3m | Depth 18.2m

### Includes:

- Media Room
- Massive open plan Living/Dining/Lounge area
- Corner stacking Sliding Glass Door
- Stone Benchtops to Kitchen
- Walk in Pantry
- Extra large Shower in Ensuite
- Ceiling Fans throughout
- Grey Glass finish throughout
- Blinds to Windows and Sliding Glass Doors
- Tiled front Porch
- Clothesline & Letterbox
- Landscaped, Turf, Fencing & Garden



Copyright © Chris Warren Homes

All rights reserved. Plans are not drawn to scale.

Dimensions, areas, sizes, and façade may vary working plans.

Visit our website  
[www.chriswarrenhomes.com.au](http://www.chriswarrenhomes.com.au)

call NEVILLE DOYLE on  
**0428 352 413**